



4 or 5 BEDROOMS

The *Salisbury*

2,152 SQ. FT.

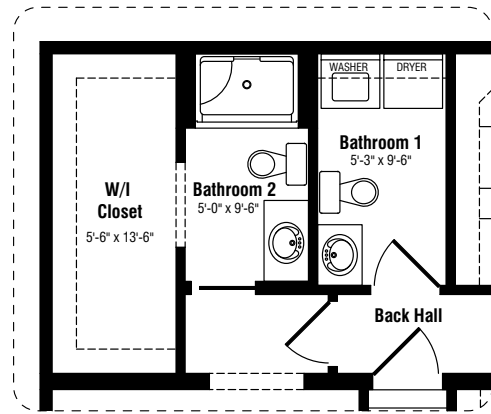
A spacious, traditional two-storey home with front-facing dormers and rear shed dormer. The main floor includes a formal living room, large eat-in kitchen, angled dining room plus a bedroom suite with walk-in closet and bathroom. Upstairs, the master bedroom features a deluxe ensuite with separate tub and shower enclosure as well as a walk-in closet. The two additional bedrooms share a second full bathroom.

Standard features include:

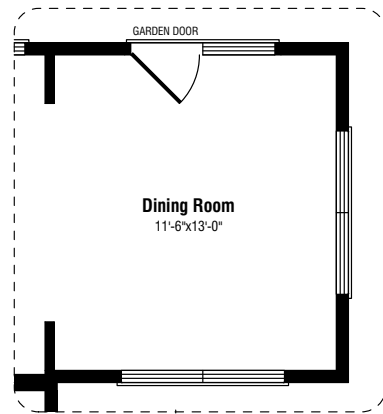
- Entry with French door to living room
- Large kitchen with raised bartop counter and breakfast area
- Master bedroom with deluxe ensuite and walk-in closet
- Angled dining room with 6 ft. garden doors
- Prestige *ComfortPlus* energy efficiency package

Floor plan options also offer:

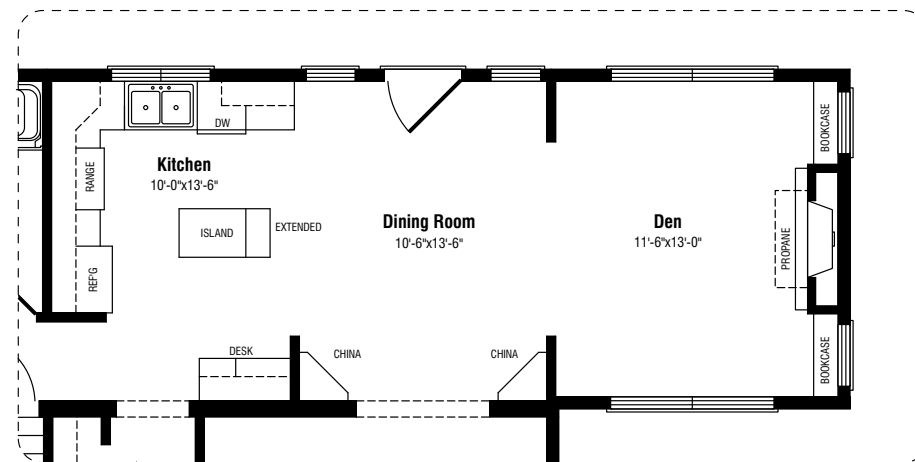
- Dining room plus den configuration
- Alternate five bedroom plan



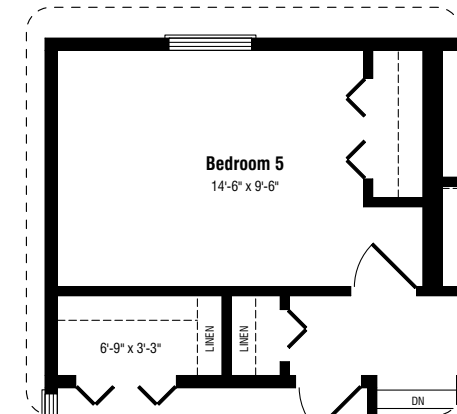
Bathroom Option



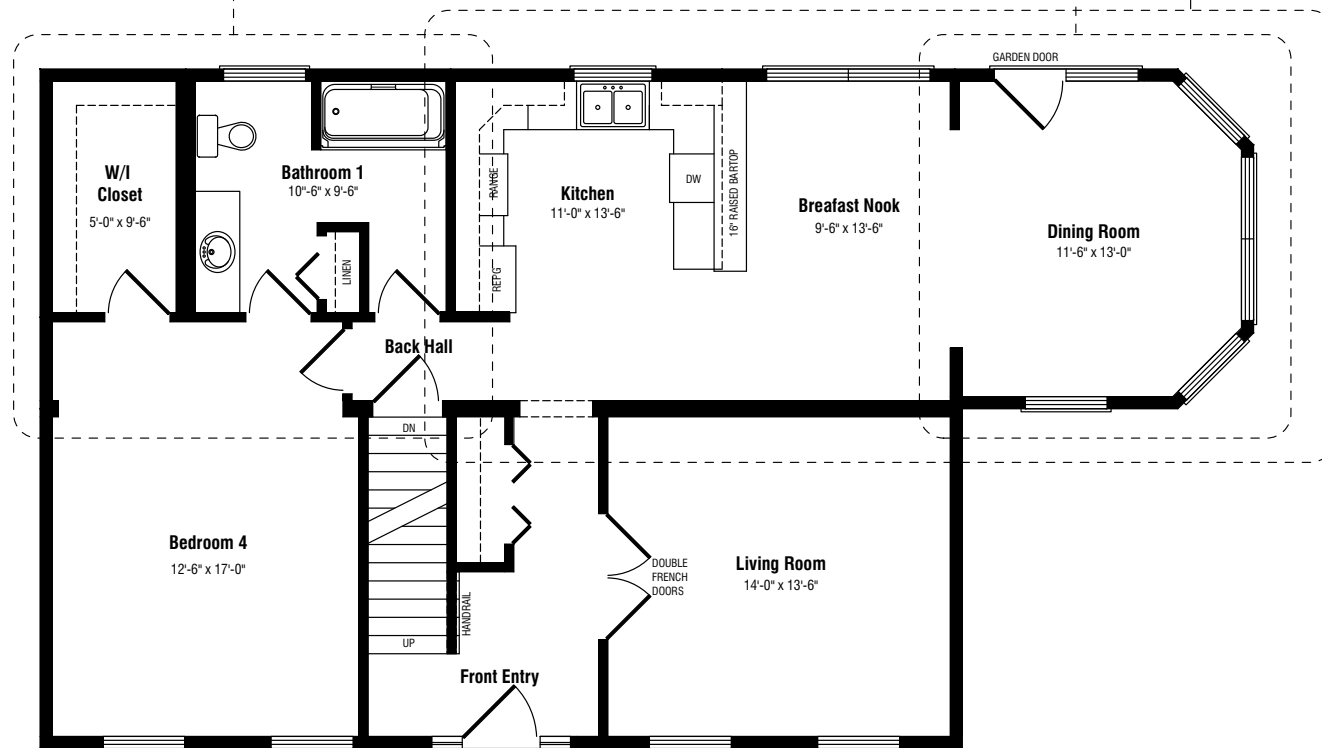
Window Option



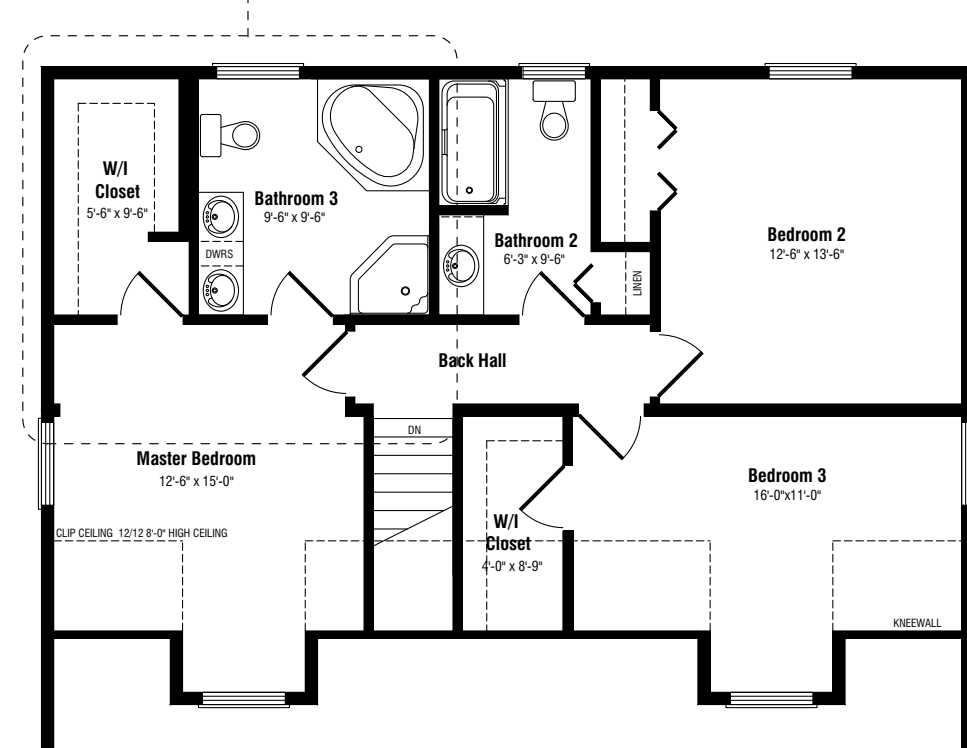
Den Option



Bedroom Option



Ground Floor



Second Floor

ELEVATION B



ELEVATION C



The Salisbury

4 or 5 BEDROOM • 3 BATHROOMS • 2,152 SQ. FT.
38'/30' x 28'

Note: Any drawings, concepts or designs created by Prestige Homes are the sole property of Prestige Homes and are subject to copyright protection under the Canadian Intellectual Property Act. Any attempt at utilizing a design, part of a design or concept without express written permission is strictly prohibited. All dimensions are approximate. Sizes and specifications are subject to change without notice.