

4 BEDROOMS

The *Portland*

1,876 SQ. FT.

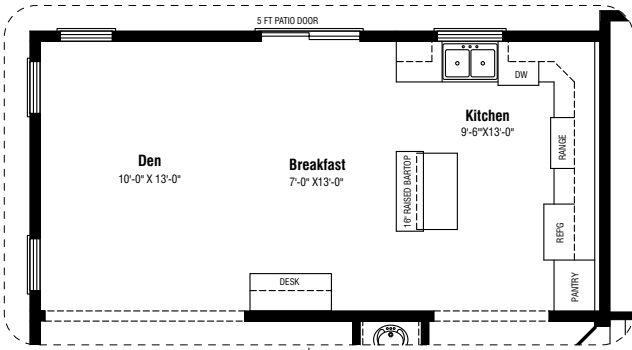
This split-level home features four bedrooms, a spacious living room with vaulted ceiling, a dining room and a large eat-in kitchen with a raised bartop counter on the centre island. The master bedroom has a deluxe ensuite with separate tub and shower plus a walk-in closet. Available options include alternative exterior designs and window treatments, ensuite layouts and kitchen plans.

Standard features include:

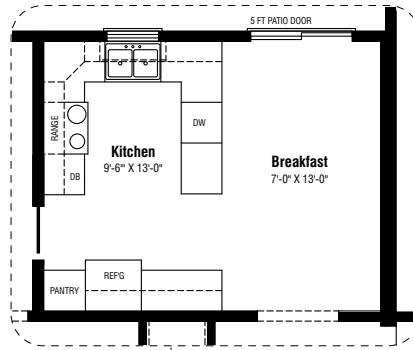
- Large living room with vaulted ceiling
- Large kitchen with centre island and breakfast area
- Master bedroom with deluxe ensuite and walk-in closet
- 2-piece powder room in front hall
- Prestige *ComfortPlus* energy efficiency package

Floor plan options also offer:

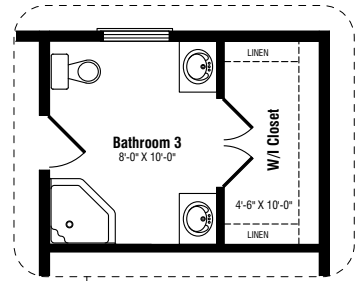
- Open kitchen, breakfast and den area
- Extended kitchen counter configuration
- Alternate master ensuite/walk-in closet



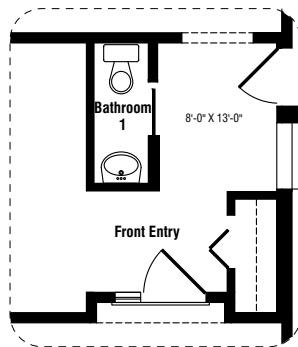
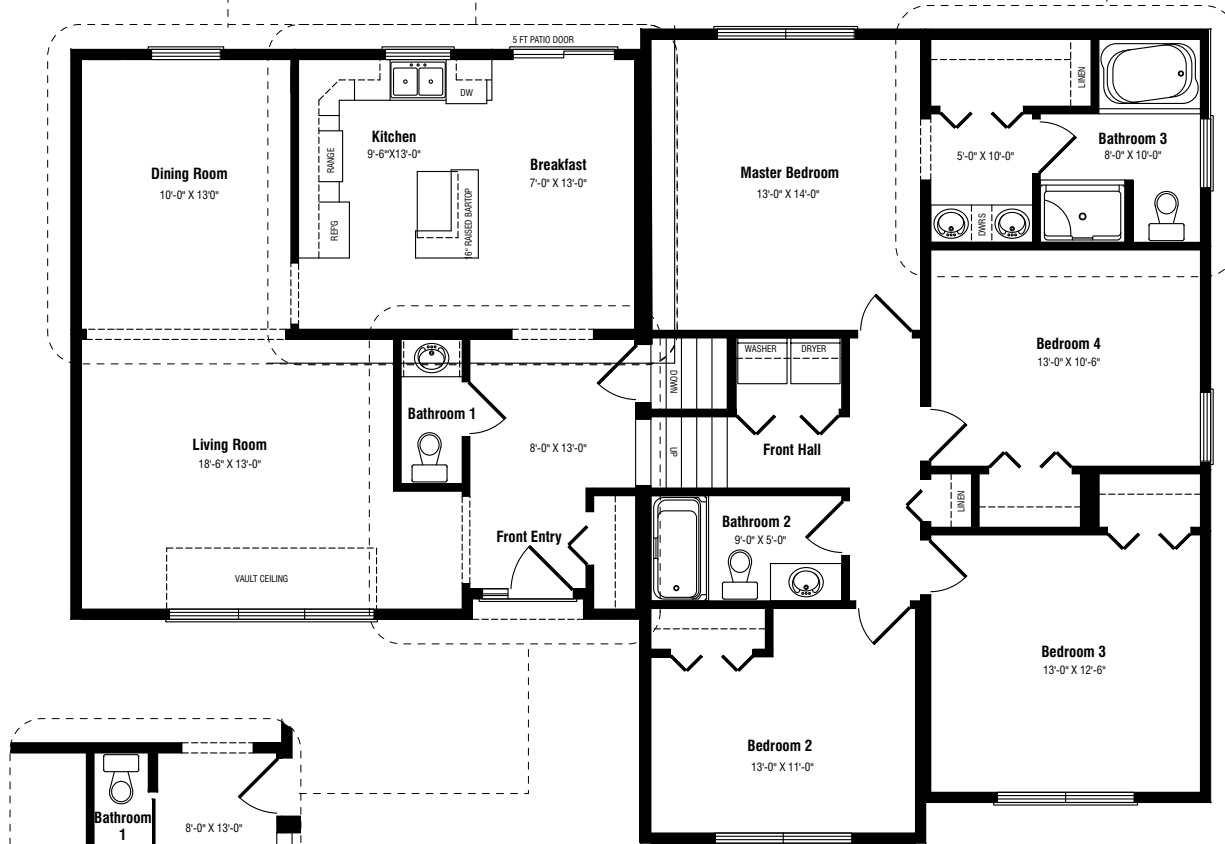
Kitchen/Den Option



Kitchen Option



Bathroom 3 Option



Bathroom 1 Option

The Portland

4 BEDROOMS • 2 1/2 BATHROOMS • 1,876 SQ. FT.

56' x 28'40"



Note: Any drawings, concepts or designs created by Prestige Homes are the sole property of Prestige Homes and are subject to copyright protection under the Canadian Intellectual Property Act. Any attempt at utilizing a design, part of a design or concept without express written permission is strictly prohibited. All dimensions are approximate. Sizes and specifications are subject to change without notice.