



ELEVATION A

3 BEDROOMS

# The Woodbridge

1,410 SQ. FT.

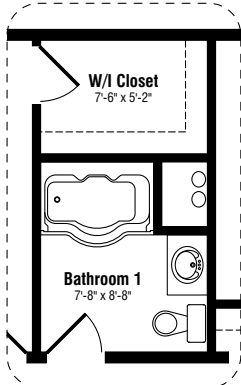
This ranch-style home features an open-concept living area and three bedrooms with lots of options. The covered front porch and vaulted picture window provide a touch of country elegance. Inside, the large living room flows into the dining area and kitchen area. Available kitchen options include either an island or angled raised bartop counter.

**Standard features include:**

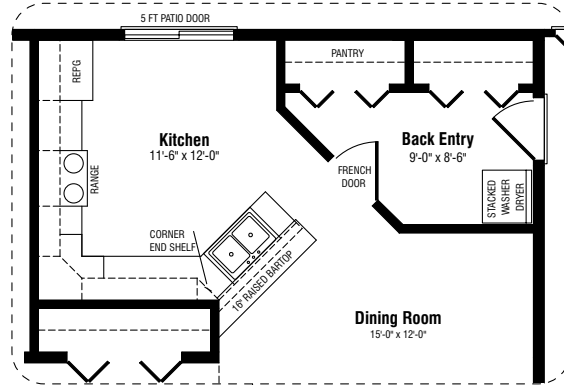
- Expansive open-concept living room, dining room and kitchen
- Large island with raised bartop counter in kitchen
- 5 ft. patio door off kitchen
- Large master bedroom with ensuite
- Main floor laundry centre
- Two alternative exterior plans with window and entry options
- Prestige *ComfortPlus* energy efficiency package

**Floor plan options also offer:**

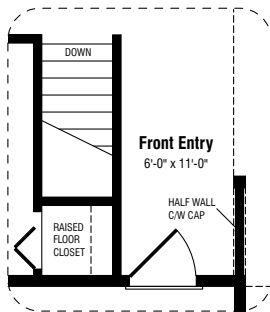
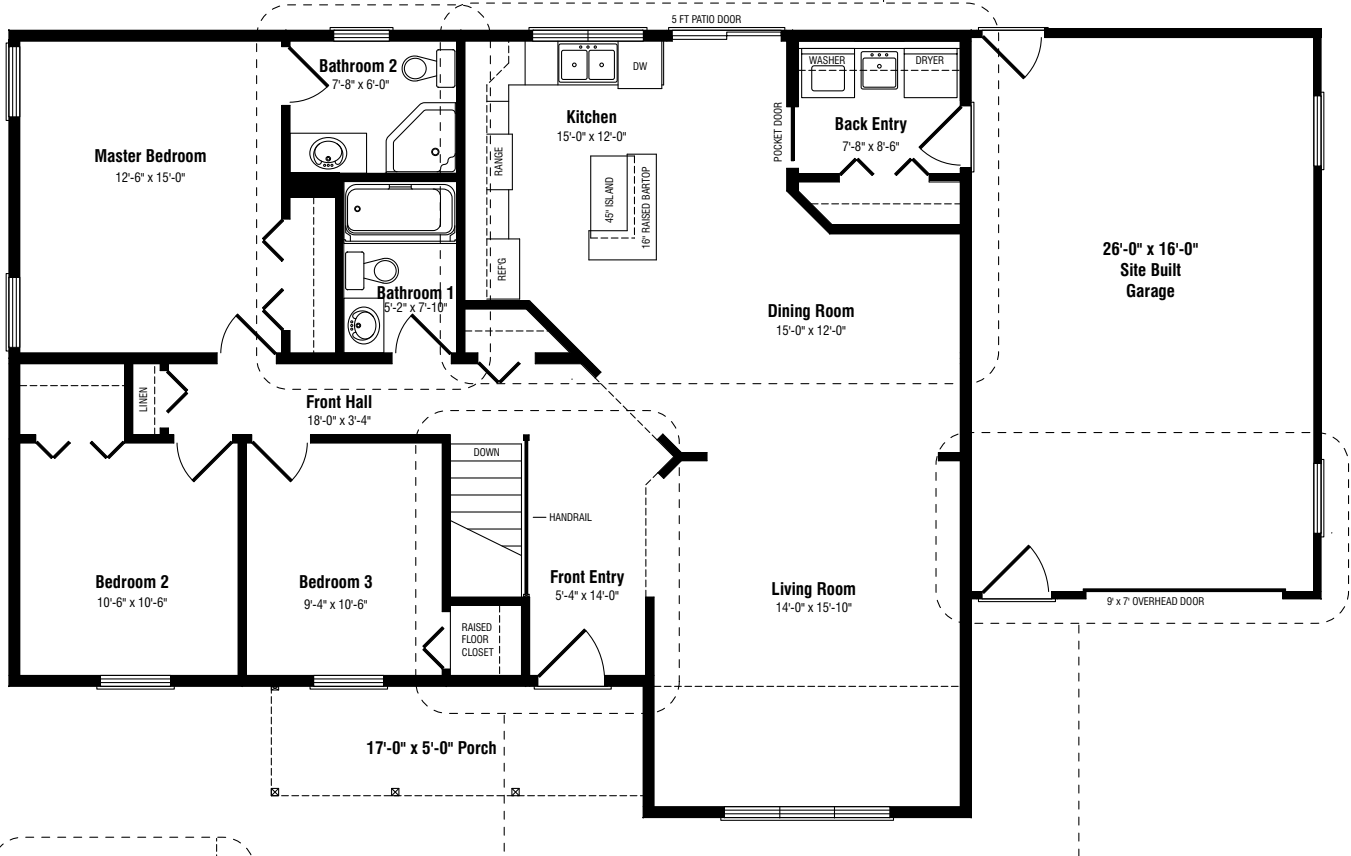
- Master bedroom walk-in closet plus deluxe common bathroom
- Angled kitchen counter with raised bartop counter
- Extended arch picture window
- Pantry plus efficiency laundry centre



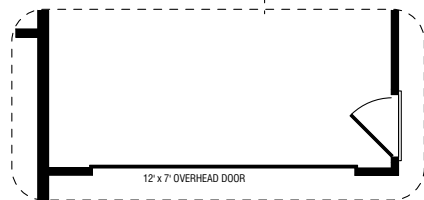
**Walk-In Closet Option**



**Kitchen Option**



**Front Entry Option**



**Garage Option**

# The Woodbridge

3 BEDROOMS • 2 BATHROOMS

1,410 SQ. FT. + GARAGE

44' x 36'

**ELEVATION B**



**ELEVATION C**



**Note:** Any drawings, concepts or designs created by Prestige Homes are the sole property of Prestige Homes and are subject to copyright protection under the Canadian Intellectual Property Act. Any attempt at utilizing a design, part of a design or concept without express written permission is strictly prohibited. All dimensions are approximate. Sizes and specifications are subject to change without notice.