



3 BEDROOMS

The *Windermere*

1,886 SQ. FT.

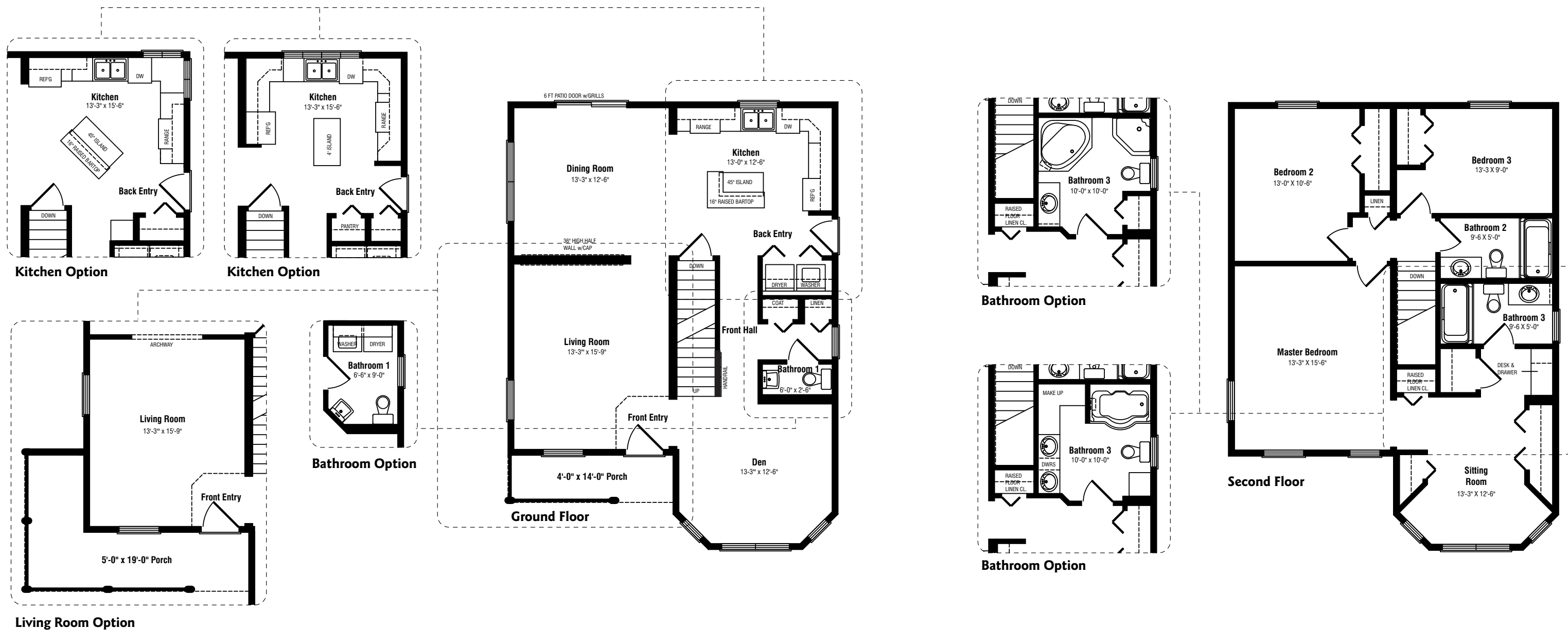
This two-storey home features three bedrooms and an open-concept living and dining area with patio doors. The main-floor den has angled walls and lots of windows. The kitchen includes a centre island with raised bartop for casual dining and an adjacent laundry area. The master bedroom offers a full ensuite as well as a sitting room. Optional exteriors offer an extended wrap-around front porch and scalloped gable-end siding.

Standard features include:

- Open living and dining area with half-wall separation and main floor den
- Master bedroom with full ensuite and separate sitting room
- Kitchen with island and adjacent laundry area
- Covered front porch
- Two-car garage
- Prestige *ComfortPlus* energy efficiency package

Floor plan options also offer:

- Wrap-around front porch
- Victorian-styled exterior finishes
- Angled kitchen centre island with raised bartop
- Extra kitchen counter areas and pantry
- Luxury ensuite with spa and separate shower



The Windermere

3 BEDROOMS • 3 BATHROOMS • 1,886 SQ. FT. + GARAGE
38 1/29' x 28'

ELEVATION B



ELEVATION C



Note: Any drawings, concepts or designs created by Prestige Homes are the sole property of Prestige Homes and are subject to copyright protection under the Canadian Intellectual Property Act. Any attempt at utilizing a design, part of a design or concept without express written permission is strictly prohibited. All dimensions are approximate. Sizes and specifications are subject to change without notice.